

COATS®

RC-100

Rim Clamp® Tire Changer

For servicing motorcycle and ATV tire/wheel assemblies, also single piece automotive and most light truck tire/wheel assemblies



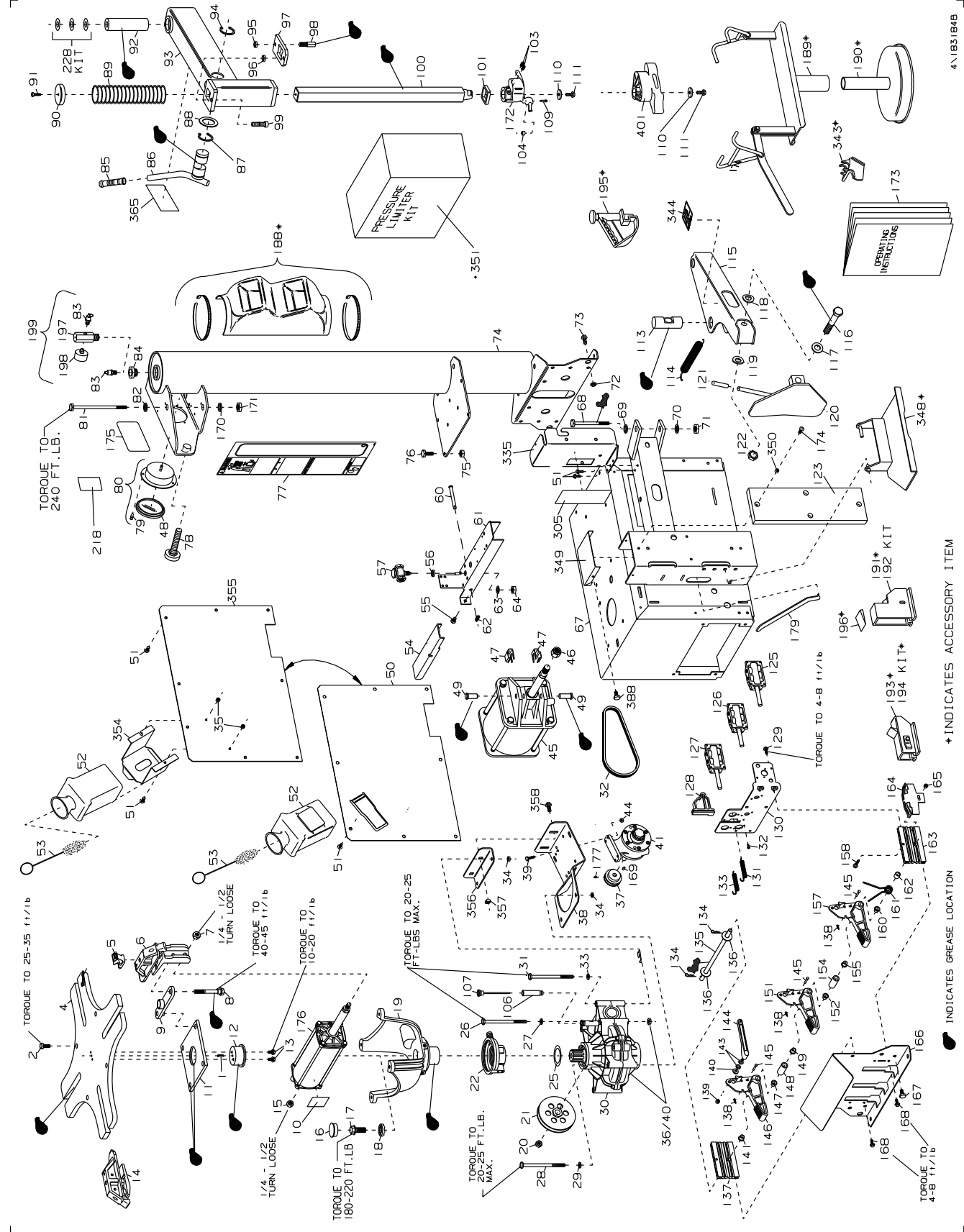
Parts Identification

READ these instructions before placing unit in service. KEEP these and other materials delivered with the unit in a binder near the machine for ease of reference by supervisors and operators.

HENNESSY INDUSTRIES, INC.

1601 J. P. Hennessy Drive, LaVergne, TN USA 37086 615/641-7533 800/688/6359 www.ammcoats.com
HENNESSY INDUSTRIES INC. Manufacturer of AMMCO®, COATS® and BADA® Automotive Service Equipment and Tools.

Manual Part No.: 8183183 20
Revision: 5/15

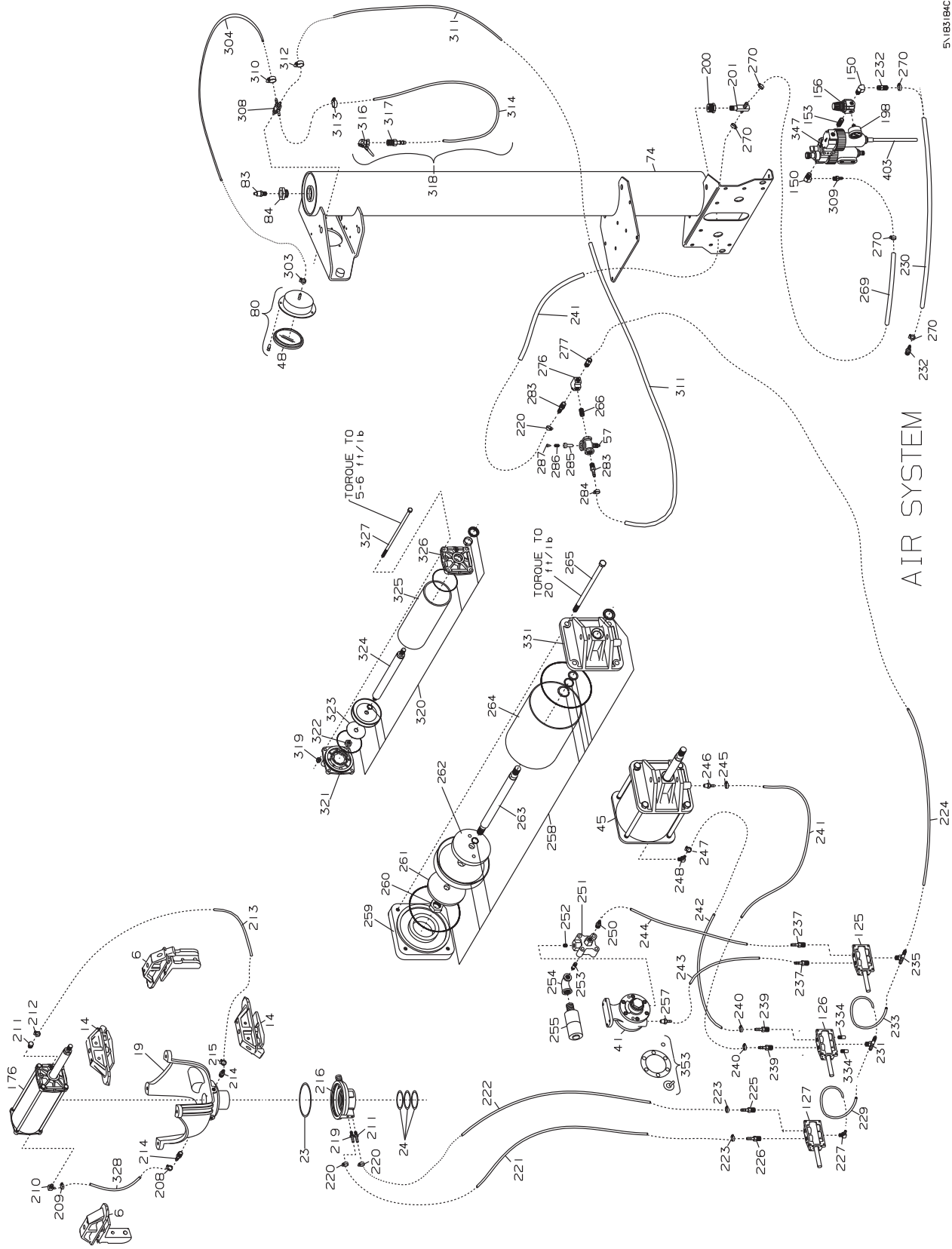


4/183/184B

Part		Part		Part	
Ref	Description	Ref	Description	Ref	Description
1	8183476 1/4 x 3/4" Roll Pin	54	8181933 Inflation Valve Pedal (RED)	111	8106302 3/8 Whiz Lock Screw-GR.5
2	8181929 3/8-16 x 1" Gr.8 Skt. Hd. Cap Scr.	55	8102459 3/8 x 3/4 HWH Self-Tap. Scr. Gr.5	113	8182550 B.L. Cylinder Rod Pivot Pin
4	8182952 Table Top Plate without Jets	56	8104673 1/4" Valve Bushing Small	114	8180230 Bead Loosener Spring
5	8181677 Rim Clamp	57	8104600 1/4" Valve	115	8182581 Bead Loosener Arm
6	8182662 Clamp Carrier - Cyl. End	60	8180103 ø3/8" x 3-1/4" Clevis Pin	116	8182579 3/4-10 x 5" Gr.5 Hex Hd. Cap Scr.
7	8101039 1/2" Gr.5 Locknut	61	8181932 Inflation Bracket (RED)	117	8182457 ø3/4 Washer
8	8181904 Table Top Link Bolt	62	8107407 Hitch Pin Retainer	118	8182558 ø3/4" Belleville Washer
9	8181734 Pivot Plate W/C	63	8104613 ø5/8" External Lock Washer	119	8182557 B.L. Washer Spacer
10	8183260 Decal - Nut Tightness, TT Cylinder	64	8104611 5/8 Jam Nut	120	8182473 B.L. Shoe
11	8181731 Table Top Pivot Plate	67	8183177 Chassis	121	8107107 Handle Grip
12	8181733 Pivot Block	68	8182579 3/4-10 x 5" Gr.5 Hex Hd. Cap Scr.	122	8182016 3/4-10 Nylon Insert Lock Nut
13	8183452 Flange Whiz-Lock Screw 5/16" x 5/8"	69	8182457 ø3/4 Washer	123	8183034 B.L. PAD 5" x 16"
14	8182661 Clamp Carrier	70	8182457 ø3/4 Washer	125	8181986 4-Way Valve W/Pull Pin
15	8101039 1/2" Gr.5 Lock Nut	71	8182016 3/4-10 Nyl. Insert Lock Nut, Gr.5	126	8181986 4-Way Valve W/Pull Pin
16	8182627 ø1-5/8" Cap Plug	72	8106303 3/8" Whiz Lock Nut-GR.5	127	8181986 4-Way Valve W/Pull Pin
17	8181742 16MM x 40mm Gr. 10.9 Hex Hd. Bolt	73	8106302 3/8" Whiz Lock Screw-GR.5	128	8181695 Cam Mounting Block
18	8182979 16MM Washer	74	8182500 Tower/Air Receiver (RED)	129	8106301 1/4 HH Self Tap Screw-GR.5
19	8181990 Spider Assembly	75	8106303 3/8" Whiz Lock Nut-GR.5	130	8183031 Valve Mounting Bracket
20	8182162 12MM Gr. 8.8 Hex Nut	76	8106302 3/8" Whiz Lock Screw-GR.5	131	8181708 Pedal Extension Spring
21	8181658 Pulley - Transmission	77	8182962 Warning Decal (STANDARD)	132	8181989 #10-24 x 3/8" Gr.8 Skt.Hd. Cap Scr.
22	8183368 Rotary Coupling Assembly	78	8182593 Adjustment Knob Assembly	133	8181708 Pedal Extension Spring
23	8181713 Large O-Ring Seal (2-244) *	79	8107983 Fastener Plastic	134	8011609 Cotter, Hair Pin
24	8181712 Small O-Ring Seal (2-142) *	80	8107985 Flanged Air Gauge w/Fasteners	135	8183398 Pedal Shaft
25	8183156 WASHER - ø2" x ø2 3/4 x .010 *	81	8181172 3/4 x 7-1/2" Gr.5 Hex Hd. Cap Scr.	136	8301121 Washer
26	8110653 3/8-16 x 6" Gr.5 Capscrew *	82	8182457 ø3/4 Washer	137	8181918 Valve Bracket Spacer Bar
27	8301032 ø3/8" Flat Washer (Zinc Plated) *	83	8182599 200 P.S.I. Safety Valve	138	8120469 Hair Pin Cotter
28	8110653 3/8-16 x 6" Gr.5 Capscrew *	84	8101312 Reducer Bushing 3/4 X 1/4 NPT	139	8181369 1/4-20 Nylon Insert Lock Nut
29	8301032 ø3/8" Flat Washer (Zinc Plated) *	85	8100979 ø3/4 Handle Grip (BLACK)	140	8107635 ø5/16 Flat Washer
30	85607709 Transmission Kit *	86	8181082 Lock Handle Lift Cam	141	8181948 ø1/2" Nylon Bearing
31	8110653 3/8-16 x 6" Gr.5 Hex Hd. Cap Screw *	87	8181095 ø1-5/8" Snap Ring	143	8181981 ø5/16 Wave Washer
32	8181205 Belt	88	8182371 ø1-5/8" Wave Washer	144	8181696 Cam Follower Lever
33	8301032 ø3/8" Flat Washer (Zinc Plated)	89	8182028 Vertical Slide Spring	145	8183399 ø3/16 x 1-1/2" Clevis Pin
34	8106303 3/8" Whiz Lock Nut-GR.5 *	90	8181771 Vertical Slide Cap	146	8181675 Standard Pedal
35	8181369 Nut-Nylok 1/4 - 20, Gr.5	91	8183151 5/16-18 x 3/4" Gr.8 BHSCS	147	8181948 ø1/2" Nylon Bearing
36	8000516 3/8-16 Hex Lock Nut Gr.5	92	8181038 Swing Arm Pivot Pin	148	8181911 Pedal Spacer
37	8182571 Motor Pulley - Air Motor	93	8182577 Swing Arm (RED)	149	8181948 ø1/2" Nylon Bearing
38	8182784 Motor Mounting Bracket (RED)	94	8181095 ø1-5/8" Snap Ring	150	8000372 1/4" NPT x 90° ST. Elbow
39	8181984 1/4-20 x 1" Gr.5 Hex Head Screw	95	8181113 1/2-13 Jam Nut-GR.5	151	8181675 Standard Pedal
40	8000516 3/8-16 Hex Lock Nut Gr.5	96	8181113 1/2-13 Jam Nut-GR.5	152	8181948 ø1/2" Nylon Bearing
41	8182572 Air Motor	97	85606343 Lock Plate (MACHINED)	153	8182366 1/4" NPT Close Brass Nipple
44	8181369 1/4-20 Nylon Insert Lock Nut GR.5	98	8181035 Lock Plate Lift Pin	154	8182327 Pedal Spacer
45	8183325 7" Bead Loosener Cylinder Assembly	99	85606344 1/2 x 5/8 Shoulder Screw	155	8181948 ø1/2" Nylon Bearing
46	8182016 3/4-16 Lock Nut-Nylon Insert GR.5	100	8182767 Vertical Slide Shaft	156	8183424 Adjustable Regulator, 1/4" NPT
47	8181912 Clevis Clip	101	8182031 Rubber Bumper	157	8181675 Standard Pedal
48	8107517 Screw On Gauge Lens	103	8130026 3/8 x 16 x 1/2 Soc HD Set Screw	158	8120321 1/4 X 1-1/4 Hex HD Cap Screw GR.5
49	8181949 ø5/8 x 1-38" Clevis Pin	104	8183356 Roller	159	8181977 Clevis Pin 3/16" X 1-1/4"
50	8182554 Side Cover Panel	107	8182186 Transmission Dipstick	160	8181948 ø1/2" Nylon Bearing
51	8106301 1/4" Hx. Hd. Self-tapping Scr., Gr.5	109	8183357 Set Screw/Dowell Pin 1/4 - 20 UNC	161	8181707 Torsion Spring
52	8106259 Lube Bottle (RED)	110	8182027 ø1.32 OD x .406 ID x 7ga. Washer	162	8181872 Torsion Spring Sleeve
53	8000491 Lube Applicator			163	8181918 Valve Bracket Spacer Bar

┌

└

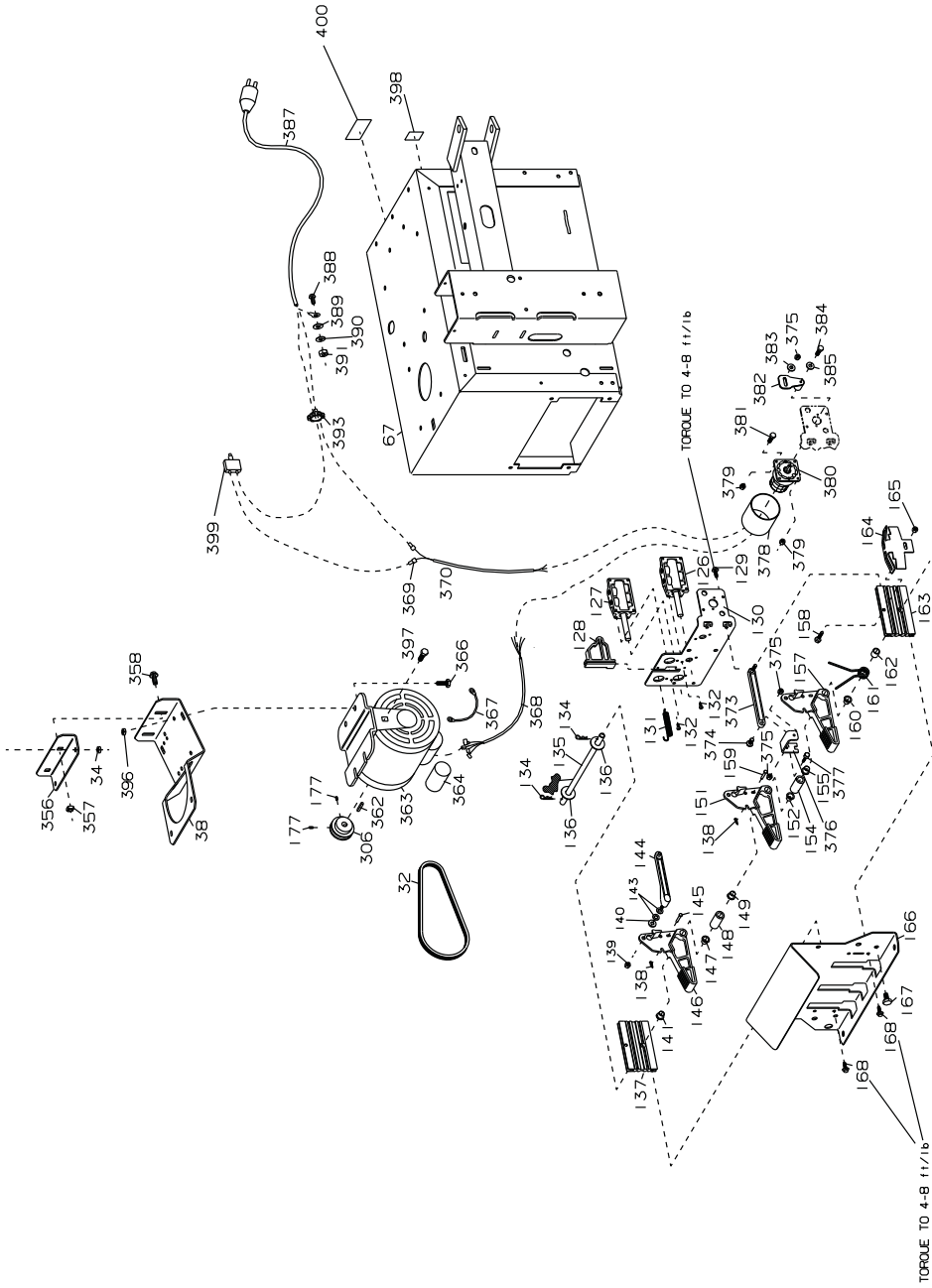


└

┌

AIR SYSTEM

Part Description		Part Description		Part Description	
Ref No.	Description	Ref No.	Description	Ref No.	Description
164	8182670 Spring Stop	222	8106289 ø1/4" x 22" Hose	304	8000481 ø1/4" x 6" Hose
165	8181369 1/4"-20 Nylon Insert Lock Nut	223	8101428 ø1/4" Hose Clamp	305	8183778 Decal - Filter Lubricator Notice
166	8182586 Foot Pedal Guard (RED)	224	8182005 ø3/8" x 20" Nylon Tube	306	8181204 Motor - Pulley (ELECT. MOTOR)
167	8102459 3/8-16 x 3/4 Selt Tap. Scr. Gr.5	225	8000378 ø1/4" Brass St. Fitting	308	8183502 Inflation Manifold
168	8106301 1/4 HH Self Tap Screw-GR.5	226	8000378 ø1/4" Brass St. Fitting	309	8101898 1/4" Brass St. Fitting
169	8182723 #3 Woodruff Key	227	8181998 1/4 NPT x 3/8" Tube Male Elbow	310	8101428 ø1/4" Hose Clamp
170	8182457 ø3/4" Washer	228	8182339 Swing Arm Shim Kit	311	8182090 ø1/4" x 61" Hose
171	8182016 3/4-10 Nylon Insert Lock Nut	229	8182005 ø3/8" x 20" Nylon Tube	312	8101428 ø1/4" Hose Clamp
172	8183355 Mount/Demount Head Assembly	230	8181147 ø3/8" x 17.25" Lg. Hose	313	8101428 ø1/4" Hose Clamp
173	8183186 Operating Instructions(STD)	231	8181988 1/4 NPT x 3/8" Tube Male Branch Tee	314	8183421 ø1/4" x 73" Hose (RED)
174	8182088 5/16-18 X 1 Torx Screw,GR.5	232	8101898 ø3/8" Hose Fitting	316	8103753 Air Chuck
175	8109888 Infl. Warning Decal (STANDARD)	233	8182005 ø3/8" x 20" Nylon Tube	317	8102390 1/4" Hose Fitting, 1/4 NPT
176	8182613 Table Top Cylinder Assembly	235	8181988 1/4 NPT x 3/8" Tube Male Branch Tee	318	8183423 Inflation Hose Assembly (RED)
177	8180217 5/16-18X3/8 SOC HD Set Scr.GR.5	237	8181999 ø3/8" Male Str. Fitting	319	8181183 Nylock Hex Nut 5/16-18
179	8181354 Bead Lifting Tool	239	8000378 ø1/4" Brass Str. Fitting	321	8183811 Table Top Cylinder Seal Kit
181	8183199 Soc. Hd. Cap Scr. 6mm x 16mm Gr.10.9	240	8101428 ø1/4" Hose Clamp	322	8181622 Cylinder Bottom Cap
182	8101898 3/8" Hose Fitting	241	8106289 ø1/4" x 22" Hose	322	8182719 1/2-13 Lock Nut-GR.5
183	8000372 1/4" X 90 Street Elbow	242	8106289 ø1/4" x 22" Hose	323	8183771 Washer 2 1/2 O.D. x .515 I.D. x .064
185	8101898 3/8" Hose Fitting	243	8182005 ø3/8" x 20" Nylon Tube	324	8181629 Table Top Cylinder Shaft
186	8000372 1/4" X 90 Street Elbow	244	8182005 ø3/8" x 20" Nylon Tube	325	8181627 Cylinder Sleeve
188	8181554 Accessory Tray Kit	245	8101428 ø1/4" Hose Clamp	326	8181620 Cylinder Top Cap
189	8108028 Tire Spreader	246	8000378 ø1/4" Brass Str. Fitting	327	8181633 Table Top Cylinder Tie Bolt, Gr.5
190	8181329 Rim Clamp Spreader Base	247	8101428 ø1/4" Hose Clamp	328	8103649 ø1/4" x 12" Hose
191	8183225 Motorcycle Clamp (Tail)	248	8000376 ø1/4" x 90" Brass Fitting	331	8183328 7" Bead Loosener Cylinder Top Cap
192	8183401 Motorcycle Clamp Kit (Tail)	250	8181999 1/4 NPT x 3/8" Malt Str. Fitting	334	8182734 Muffler
193	8235740 ATV Clamp (Tail)	251	8181191 Quick Exhaust Valve	335	8183770 Filter/Lubricator Mtg. Bracket
194	8181891 ATV Clamp Kit (Tail)	252	8000580 1/4 NPT Close Nipple	338	8130026 3/8 X 1/2" Soc. HD Set Screw-GR.8
195	8435685 Drop Center Aid	253	8181207 3/8 NPT Close Nipple	343	8183367 Bootie-Mount/Demount Hea-Single
196	8183248 Plastic Clamp Jaw	254	8181195 1/2-3/8 Reducing Elbow	8183373 Bootie-Mount/Demount Head-Pkg/2	
197	8109784 Gauge Protector Manifold	255	8181206 Muffler	8183374 Bootie-Mount/Demount Head-Pkg/12	
198	8108968 Air Gauge	257	8181999 1/4 NPT x 3/8" Male Str. Fitting	344	8182768 Decal - Pinch Point Caution
199	8182640 California Gauge Kit	258	8182638 7" Bead Loosener Cylinder Seal Kit	347	8182827 Filter/Lubricator
200	8101312 Reducer Bushing 3/4" x 1/4" npt	259	8183327 7" Bead Loosener Cylinder Bot. Cap	348	8183262 Lift Assembly - ATV Wheels
201	8107234 Tee 1/4" npt X 3/8" Hose	260	8182016 3/4-10 Gr.5 Nylon Insert Lock Nut	349	8183274 Cover - Vertical Channel
207	8000378 1/4" Brass St. Fitting	261	8182566 Bead Loosener Cyl. Steel Washer	350	8183287 Spacer - B.L. Torx Bolts
208	8101428 ø1/4" Hose Clamp	262	8182566 Bead Loosener Cyl. Steel Washer	351	8183291 Kit - Pressure Limiter, RC-100
209	8101428 ø1/4" Hose Clamp	263	8182565 Bead Loosener Cylinder Shaft	353	8182912 Air Motor Repair Kit
210	8110497 90 Deg. Male Elbow-1/8 NPT	264	8182568 Bead Loosener Cylinder Sleeve Barrel	354	8182809 Lube Bottle Bracket
211	8104844 1/4 Hose x 1/8 NPT Str. Fitting	265	8110890 1/2-13 X 9" Long HHCS-GR.5	355	8182878 Panel/Side Cover
212	8101428 ø1/4" Hose Clamp	266	8182366 Close Nipple 1/4" npt Brass	356	8182923 Motor Adjustment Bracket
213	8104684 ø1/4" x 8" Hose	269	8182497 ø3/8" x 36" Hose	357	8143044 3/8-16 Tinnerman Nut
214	8000378 1/4" Brass St. Fitting	270	8101428 ø1/4" Hose Clamp	358	8106302 3/8" Whiz Lock Screw Gr.5
215	8101428 ø1/4" Hose Clamp	276	8000643 Tee 1/4" npt, Brass	362	8180588 Motor Key
216	8181349 Rotary Coupling	277	8181999 St Male Fitting 1/4" npt x 3/8" Tube	363	8185483 Electric Motor - 115v 60Hz
218	8109769 Decal - Release Valve	283	8000378 1/4" Brass St. Fitting	364	8180638 Electric Motor - 220v 50Hz
219	8183369 ø1/4" Hose x 1/8 NPT Str. Fting w/.062 orifice	284	8101428 ø1/4" Hose Clamp	365	8183354 Motor Capacitor (ONLY)
220	8101428 ø1/4" Hose Clamp	285	8104649 Poppet - 1/4" Valve	366	8120325 5/16-18 x 1" Gr.5 Ser. Washer Hd.Scr.
221	8106289 ø1/4" x 22" Hose	286	8102468 Poppet Spring - 1/4" Valve	367	8180560 Ground Jumper
		287	8105671 1/4" Valve End Cap	368	8184562 Motor Cable Assembly, 115V 60Hz
		303	8101428 ø1/4" Hose Clamp	8181511 Motor Cable Assembly, 220V 50Hz	

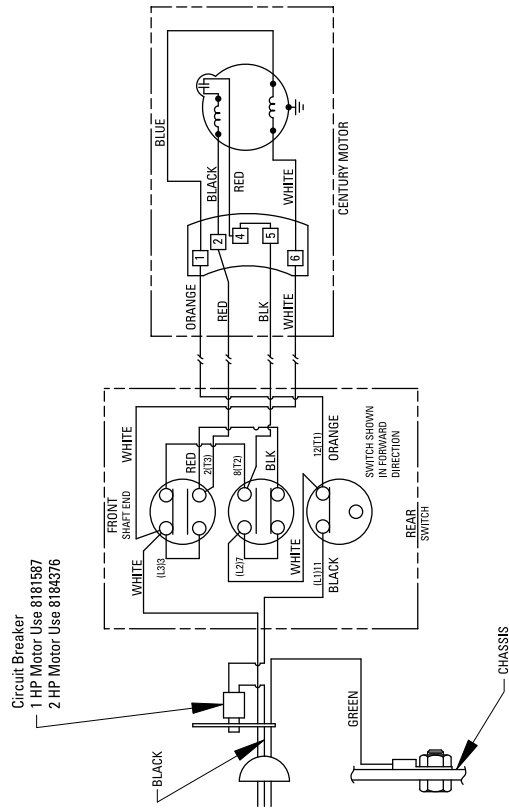


ELECTRIC MOTOR MODELS

Ref No.	Description	Part No.	Description	Ref No.	Description	Part No.	Description
369	8143254 Wire Joint	382	8181728 Switch Actuator Lever	393	906077 Strain Relief, 240V		
370	8182141 Cord - Entrance to Switch	383	8000745 Ø1/4" Flat Washer	396	8181183 Nut-Nyl. Ins. Lk., 5/16-18 Gr.5		
373	8181699 Switch Lever Assembly	384	8181982 3MM x 12mm Gr.5 Hex Hd. Cap Scr.	397	8120455 #10-24 Gr.2 Selt Tapping Screw		
374	8182743 Shoulder - Screw, 5/16	385	8301072 #6 Internal Tooth Lock Washer	398	8180237 Caution Decal		
375	8181369 1/4-20 Gr.5 Nylon Insert Lock Nut	387	8181956 Power Cable Assy, 115V w/o Breaker	399	8181587 Circuit Breaker USA/Canada 15 Amps		
376	8182363 Sw. Pedal Lever Spacer (RED)		8182257 Power Cable Assy, 115V w/Breaker	8184963	Circuit Breaker Export 8 Amps		
377	8181984 Screw - Hex Hd., 1/4-20 x 1.00 Gr.5	388	8106301 1/4-20 Gr.5 Hex Hd. Selt Tap. Scr.	400	8140963 Mount - Elect. Caution (C.S.A.)		
378	8181959 Switch Cover	389	8150441 1/4" Star Lock Washer	401	8182960 Mount/Demount Head (PLASTIC)		
379	8182682 #10-24 Gr.5 Nylon Insert Lock Nut	390	8301142 1/4" Spring Lock Washer	403	8183881 Nylon Tube 3/8" x 7"		
380	8182957 Reversing Switch	391	8107440 1/4-20 Gr.5 Hex Nut				
381	8181983 #10-24 x 5/8" Gr.8 Bt.Hd.Skt.Cap Scr.						

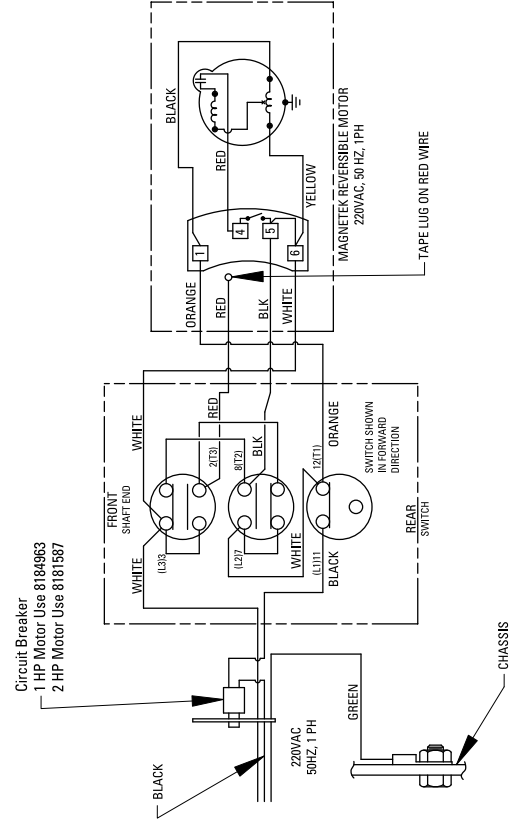
Wiring Diagrams

Domestic & C.S.A.



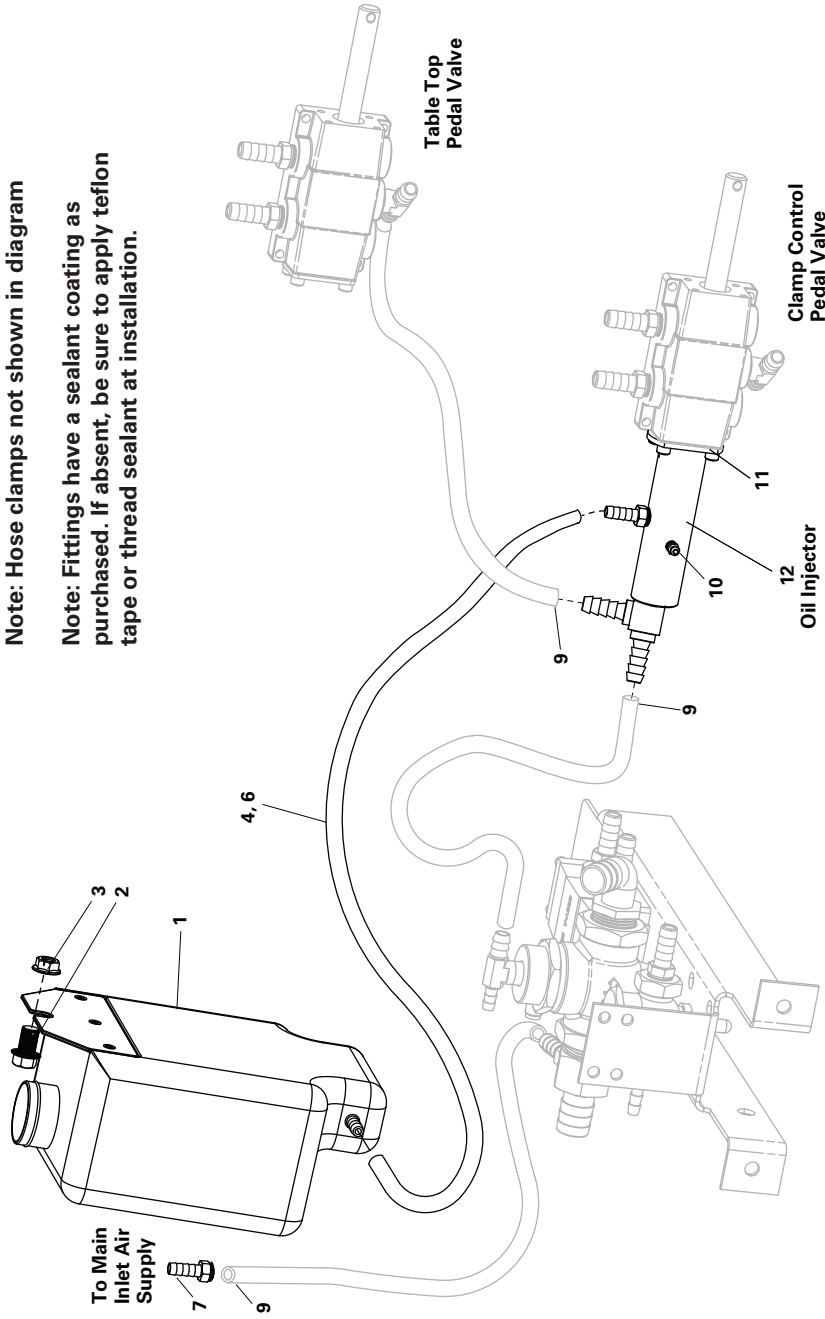
To reverse rotation, interchange red and black wires at motor.

Export 220VAC



To reverse rotation, interchange red and black wires at motor.

OIL INJECTOR DIAGRAM *If equipped.



Note: Hose clamps not shown in diagram

Note: Fittings have a sealant coating as purchased. If absent, be sure to apply teflon tape or thread sealant at installation.

Inflation Bracket

Ref No.	Part Description
1	8185629 Tank Reservoir
2	81856301 Reservoir Cap
3	8183452 5/16-18 Flange Screw
4	924724 5/16-18 Flange Hex Nut
5	8184243 1/4" x 49" Red Rubber Hose
6	8183770 Holding Bracket
7	85606362 3mm Spring Hose Clamp
8	8101898 St. 1/4" NPT 3/8" Hose Fitting
9	8150124 Zip Tie
10	85606363 16mm Spring Hose Clamp
11	8103737 Release Valve
11	8184686 Spacer Plug
12	8184675 Oil Injector (includes Spacer Plug)